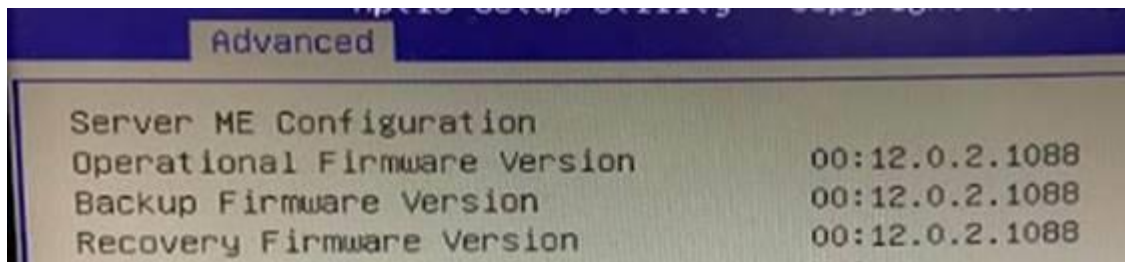
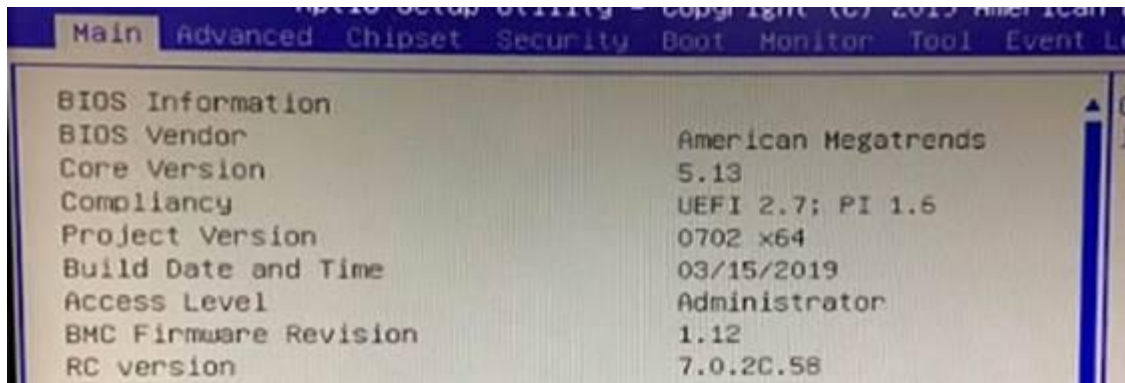
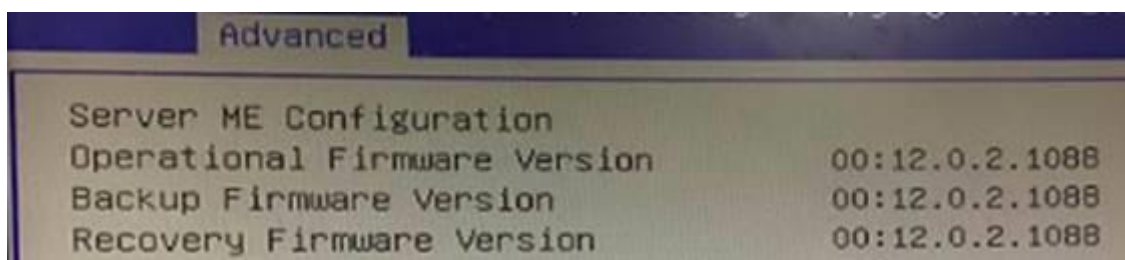
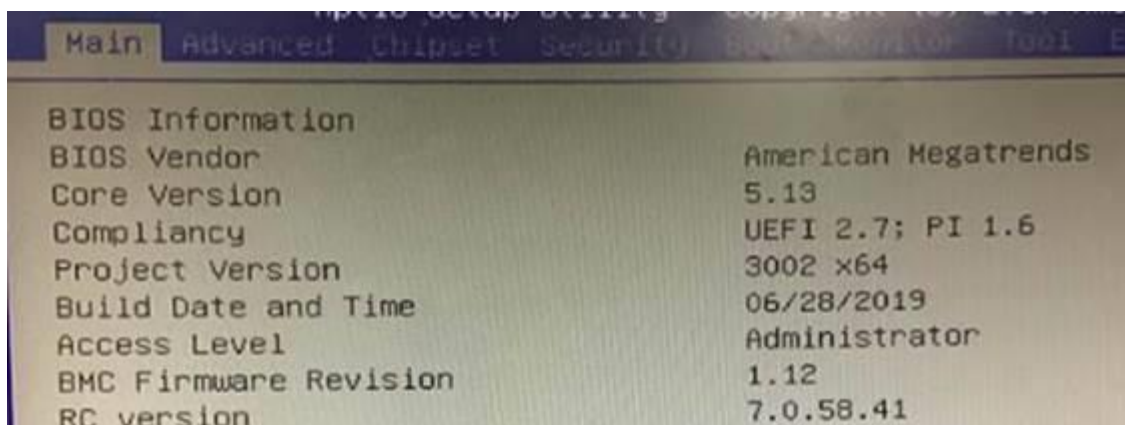


E500 G5 SFF(WS C246M PRO, WS C246M PRO/SE) MEUpdate tool SOP

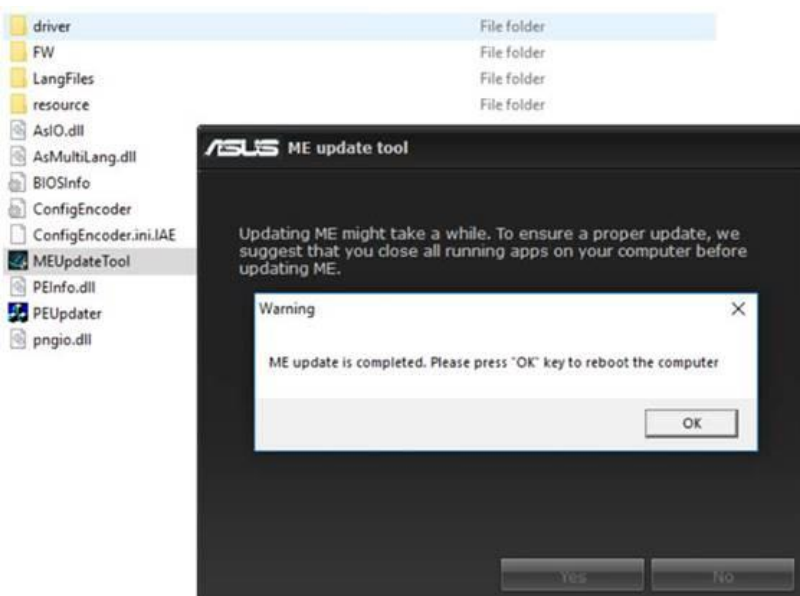
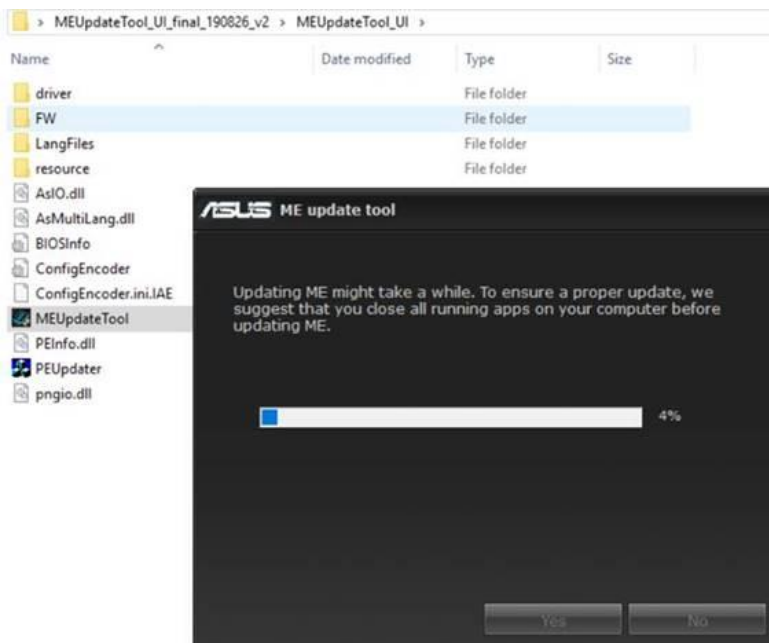
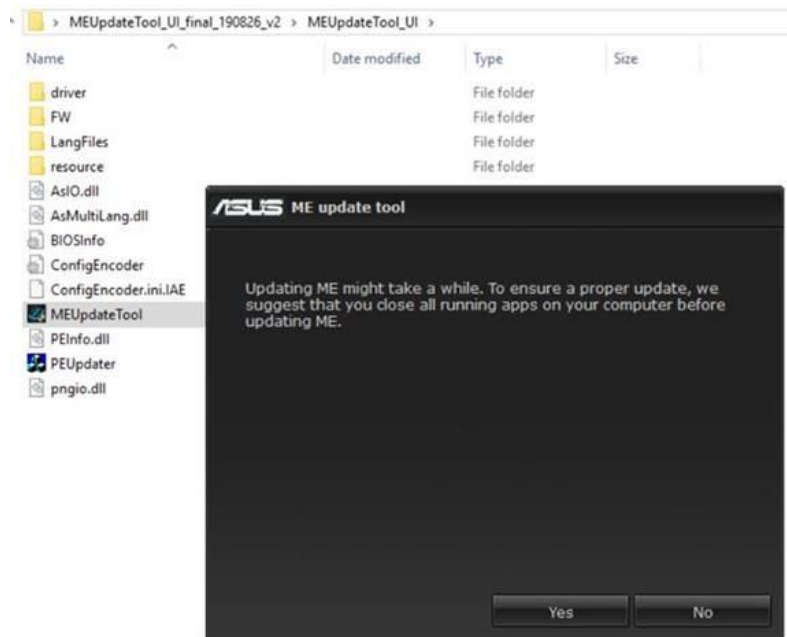
1. 请确认 BIOS 版本应为 0702，ME 版本应为 12.0.2.1088



2. 请使用 EZflash 将 BIOS 更新至 3002，更新完成后 ME 版本仍为 12.0.2.1088



3. 解压缩 " MEUpdateTool_UI_20190826_WS_C246M_PRO " 至桌面，并执行 " MEUpdateTool.exe " 更新完成后请重新启动



4. 请进入 BIOS 确认版本，ME 版本应更新为 12.0.39.1431

